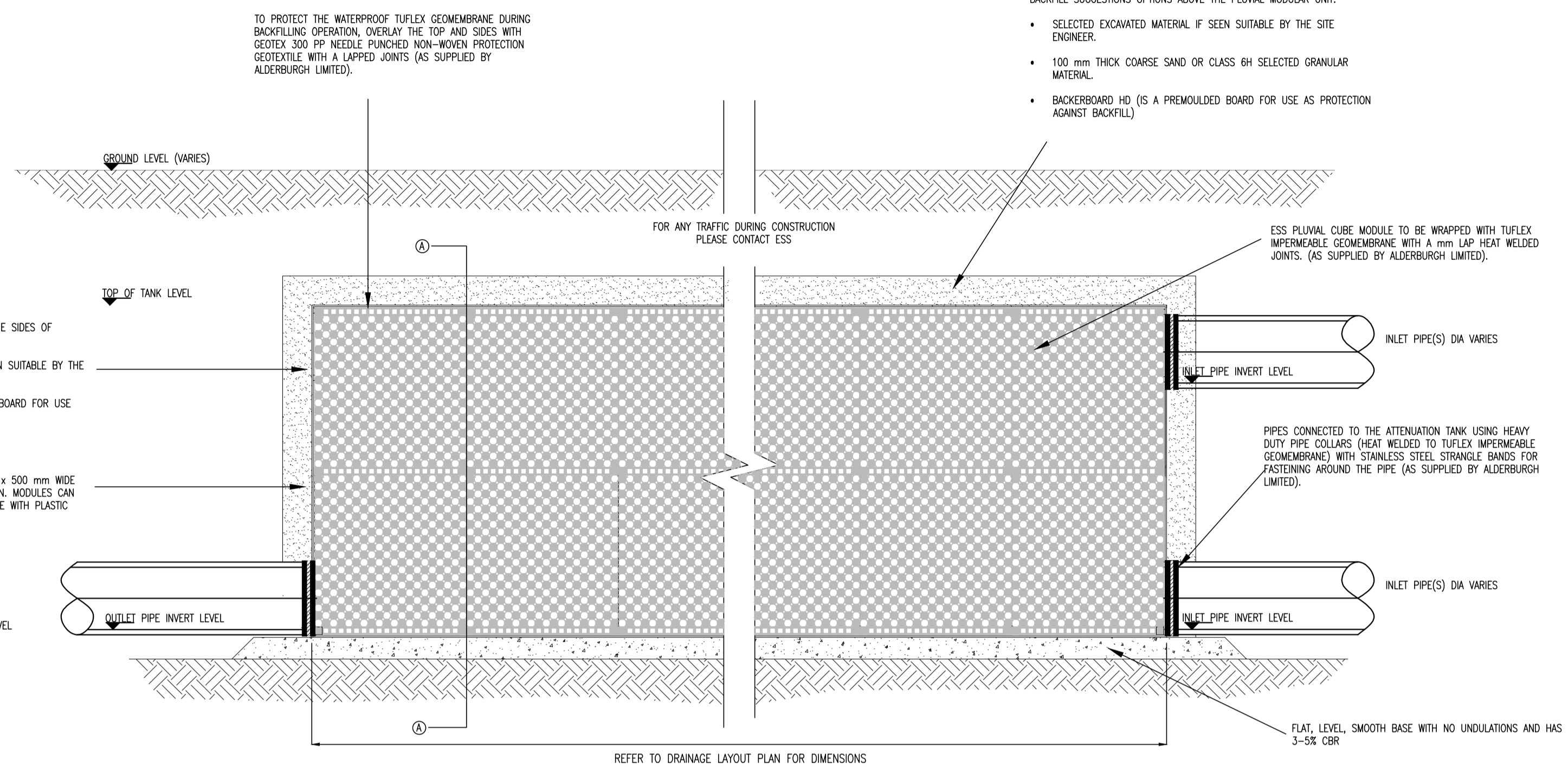


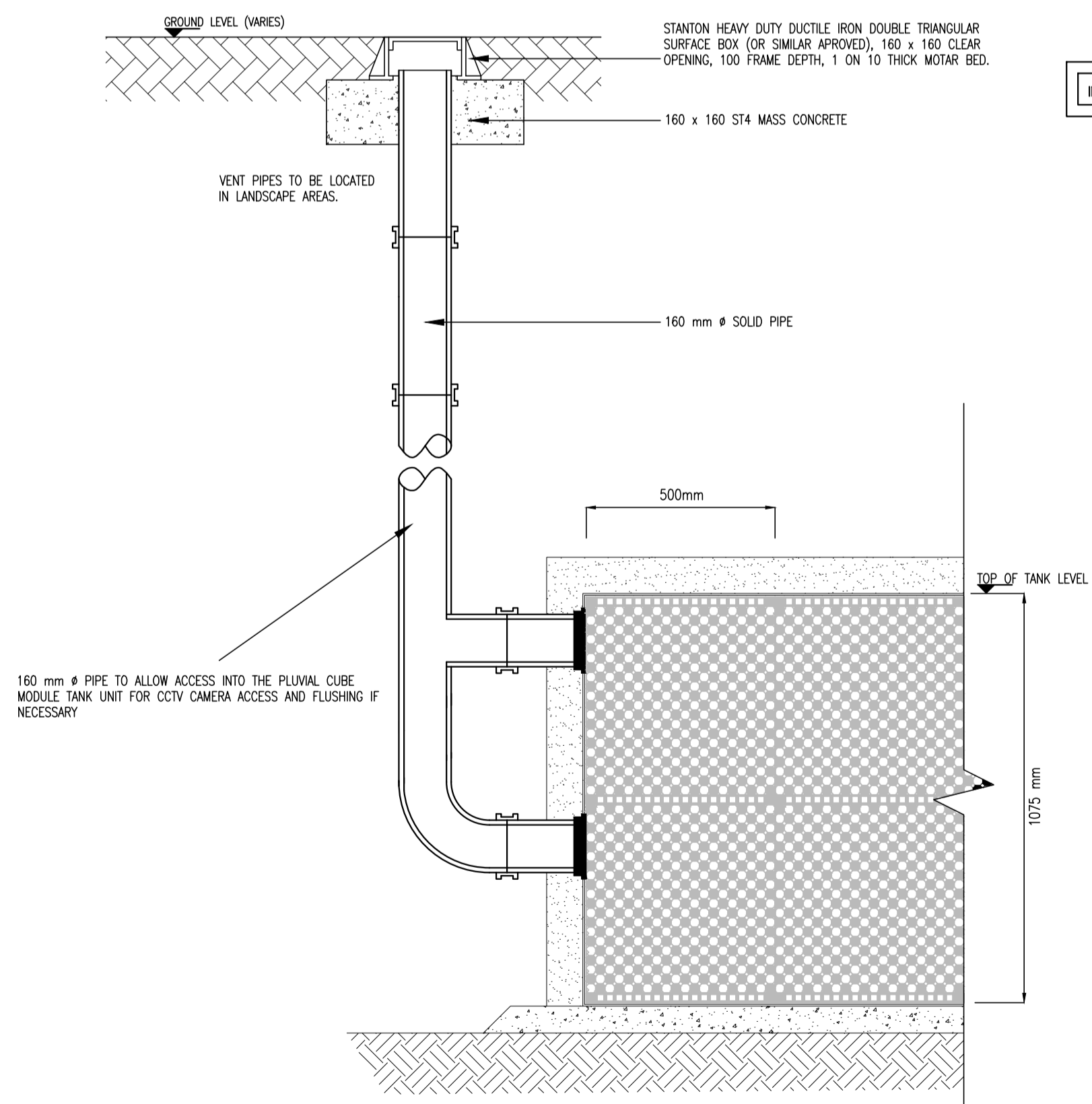
**TYPICAL VENT BOX DETAIL
(OPTION 2)**

A 3 - 5% CBR HAS BEEN ASSUMED AT SUB-BASE LEVEL SHOULD THE CBR BE TESTED AND FOUND TO BE LESS THAN 3% THEN THE ENGINEER SHALL BE NOTIFIED. ALSO, ANY SOFT SPOTS FOUND AT SUB-BASE LEVEL SHALL BE REPORTED TO THE ENGINEER



TYPICAL OUTLET PIPE CONNECTION **TYPICAL INLET PIPE CONNECTION**

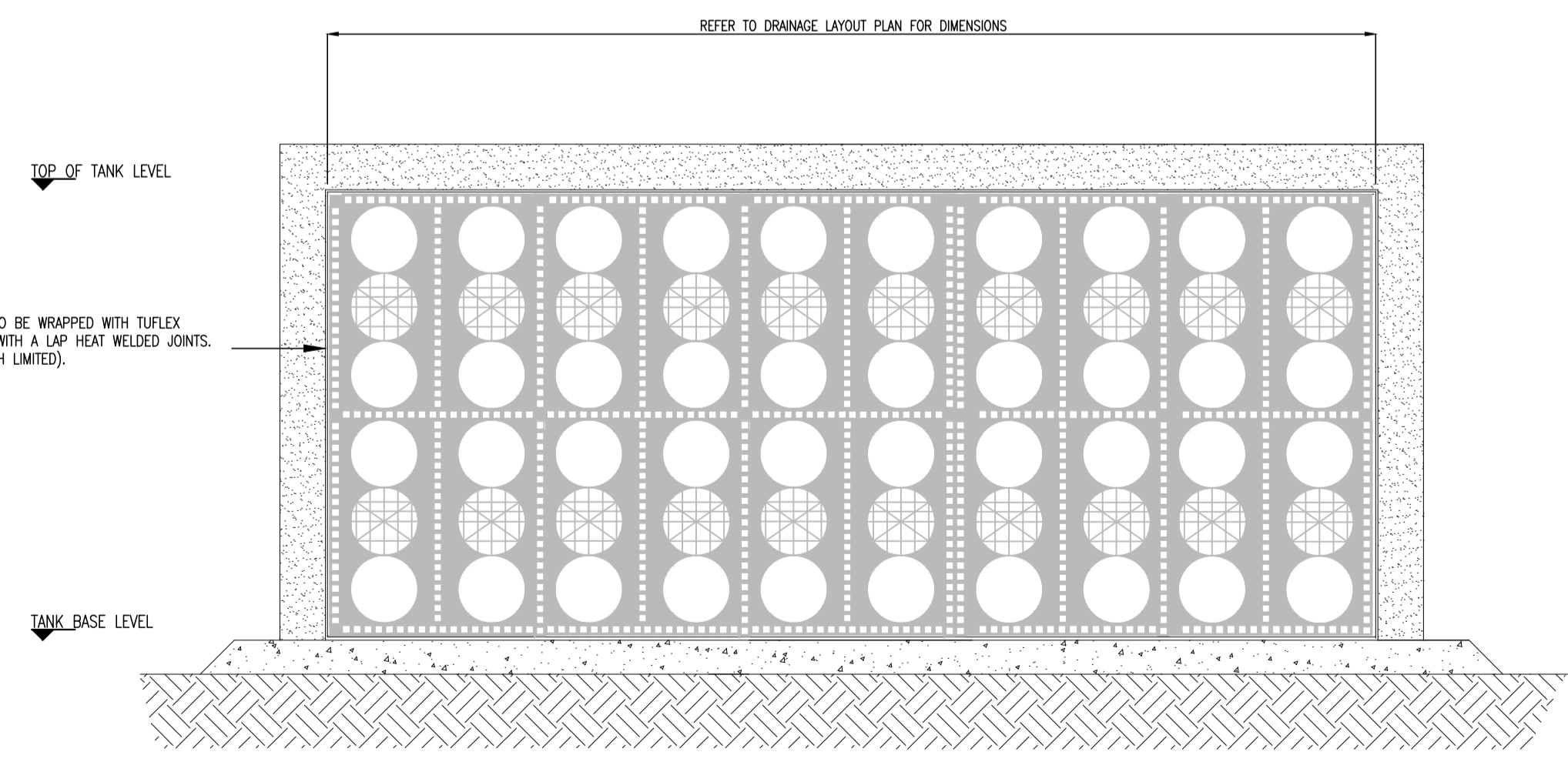
**TYPICAL DETAILS OF ATTENUATION TANK USING PLUVIAL CUBE
MODULE UNITS**



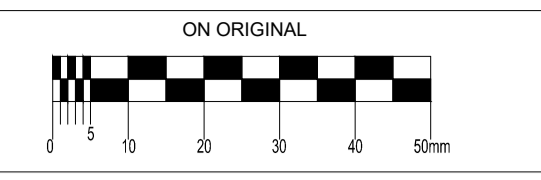
**TYPICAL 160mm VENT/ACCESS PIPE CONNECTION
OPTION 1**

INLET/OUTLET PIPES MUST BE SUPPORTED WITH CONCRETE TO PROTECT IT DURING BACKFILLING

THE CONTRACTOR SHALL PROHIBIT THE MOVEMENT OF CONSTRUCTION PLANT ACROSS THE STORAGE TANK AND WHERE NECESSARY PROVIDE ADDITIONAL SUPPORT AND PROTECTION TO THE STRUCTURE. PARTICULARLY FIRST CONSTRUCTION, TEMPORARY FENCING CAN BE USED TO PROHIBIT TRADE STOCKS, PILING MATERIALS, HEAVY PLANTS ETC.,



**TYPICAL DETAILS OF ATTENUATION TANK USING PLUVIAL CUBE
MODULE UNITS
SECTION A-A**



© COPYRIGHT OF THIS DRAWING IS RESERVED BY DBFL CONSULTING ENGINEERS. NO PART SHALL BE REPRODUCED OR TRANSMITTED WITHOUT THEIR WRITTEN PERMISSION.

NO CHANGES OF WHATSOEVER NATURE ARE TO BE MADE TO ANY DETAILS SET OUT OR CONTAINED IN ANY DBFL SPECIFICATIONS OR DRAWINGS UNLESS THE EXPRESS CONSENT HAS BEEN OBTAINED IN ADVANCE, IN WRITING, FROM DBFL

- NOTES:
- C20/25 CONCRETE TO HAVE A MINIMUM CEMENT CONTENT OF 250kg/m³, MAXIMUM WATER/CEMENT RATIO OF 0.65 AND SLUMP CLASS S2.
 - C25/30 CONCRETE TO HAVE A MINIMUM CEMENT CONTENT OF 280kg/m³, MAXIMUM WATER/CEMENT RATIO OF 0.65 AND SLUMP CLASS S2.
 - C40/50 CONCRETE TO HAVE A MINIMUM CEMENT CONTENT OF 400kg/m³, MAXIMUM WATER/CEMENT RATIO OF 0.45 AND SLUMP CLASS S3.
 - WHERE CLASS 6F1/6F2 CAPPING MATERIAL IS PROPOSED WITHIN 500mm OF CONCRETE OR STEEL, CLASS 6N TO BE USED INSTEAD.
 - WHERE FOOTPATHS ARE LOCATED ADJACENT TO ROADS, C40/50 CONCRETE TO BE USED. ALTERNATIVELY, FOOTPATHS LOCATED BEHIND VERGES C25/30 CONCRETE MAY BE USED.

NOTE:
ALL WORKS & SPECIFICATIONS TO BE UNDERTAKEN IN ACCORDANCE WITH
• TII SPECIFICATION FOR ROADWORKS
• GREATER DUBLIN CODE OF PRACTICE FOR DRAINAGE WORKS
• RECOMMENDATIONS FOR SITE DEVELOPMENT WORKS

0	10-06-22	ISSUED FOR PLANNING	CDC	LMCL
rev	date	description	by	chkd.

STATUS CODES
purpose acceptance
P3 - PLANNING PERMISSION S - ISSUED



DUBLIN OFFICE: Ormond House, Upper Ormond Quay, Dublin 7, D07 W704
PHONE +353 1 450 4000
CORK OFFICE: 14 South Mall, Cork, T12 CT91
PHONE +353 21 2024538
WATERFORD OFFICE: Sals-By-The-Aburn, Marlana Gate, Canada Street, Waterford, X91 W028
PHONE +353 51 309 500

project ref.
MIXED USE DEVELOPMENT-CHADWICKS. SWORDS ROAD, SANTRY.

drawing title
SURFACE WATER DETAILS SHEET 6 OF 6

client
Dwyer Nolan Developments

designed by	author	scale	sheet size
LMCL	DCH	AS SHOWN	A1
drawing no.	revision		
200060-X-91-X-XXX-DR-DBFL-CE-5006			0